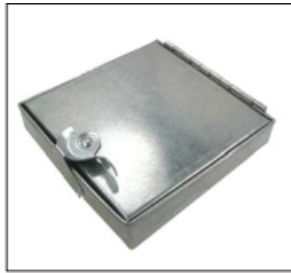
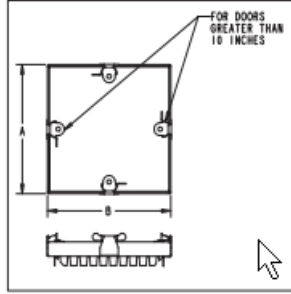




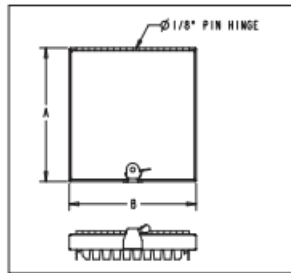
Hinged / Cammed Duct Access Doors



Cammed Access Door



Hinged Access Door



STANDARD CONSTRUCTION

Door Panel:

Consists of 24GA GA, manufactured from ASTM A-653 G60, panels mechanically locked together.

Insulation:

1" high-density fiberglass insulation UL Classifications; FHC25/50, ASTM C 1071; Type 1, ASTM G 21, Greenguard Indoor Air Quality Certified*, Greenguard Children and Schools, NFPA 90A and 90B.

Gasket:

Closed-cell neoprene gasket is UL94HF1 listed with service temperature range of 20° F to 200° F The gasket is bonded to the inside of the frame.

Dovetail Frame:

Measuring 6" x 6" to 12" x 12" are manufactured from 24 gauge galvanized steel. Frames measuring 14" x 14" to 24" x 24" are manufactured from 22 gauge galvanized steel. All frames are manufactured with spot welds at each corner for increased strength and an improved dovetail design for easy installation on metal duct.

Cams & Strikes:

The cam is stamped using 16 Ga galvanized steel. The latch is stamped from 20 Ga galvanized steel. Each cam is secured to the door with a rivet. The latch is secured to the frame in two locations for added rigidity.

FEATURES

Meets 2005 SMACNA Standards for pressure class & gauges(Refer to page 7-2, figure 7-2) Made with Domestic Galvanized Steel Union Made

Regular doors can be used up to 4"wg High Pressure doors can be used up to

LIST PRICES

Cammed Duct Access Doors

Size	List Price
6 x 6	\$18.00
8 x 8	\$19.00
10 x 10	\$24.00
12 x 12	\$25.00
14 x 14	\$30.00
16 x 16	\$38.00
18 x 18	\$43.00
20 x 20	\$52.30
24 x 24	\$54.00
16 x 12	\$40.00
24 x 12	\$57.00

LIST PRICES

Hinged Duct Access Doors

Size	List Price
6 x 6	\$19.00
8 x 8	\$20.00
10 x 10	\$25.00
12 x 12	\$26.00
14 x 14	\$31.00
16 x 16	\$38.50
18 x 18	\$44.00
20 x 20	\$54.00
24 x 24	\$62.00
16 x 12	\$41.00
24 x 12	\$64.30

Access doors furnished as actual listed size.