

Visit our website at: [www.ies-pgh.com](http://www.ies-pgh.com)



**COOK**

**GC 222-862**



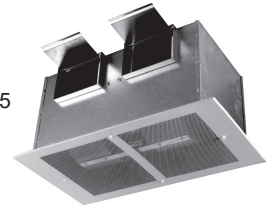
**Gemini 222 - 740**



**Features**

- Manufactured by an ISO 9001 certified company
- AMCA certified ratings seal for sound and air performance
- Listed by Underwriters Laboratories UL 705
- Minimum 20 gauge galvanized steel, acoustically insulated cabinet
- Permanently Lubricated ODB motor with thermal overload protection
- Forward curved galvanized steel wheel balance to AMCA Standard 204-05
- High impact styrene grille on 200 & 300 series
- Powder painted white steel grille on 400 through 800 series
- Simple conversion from ceiling to inline. No kit required.
- Optional fan speed controller available for precise system balancing
- Standard 115/1/60 fan motors

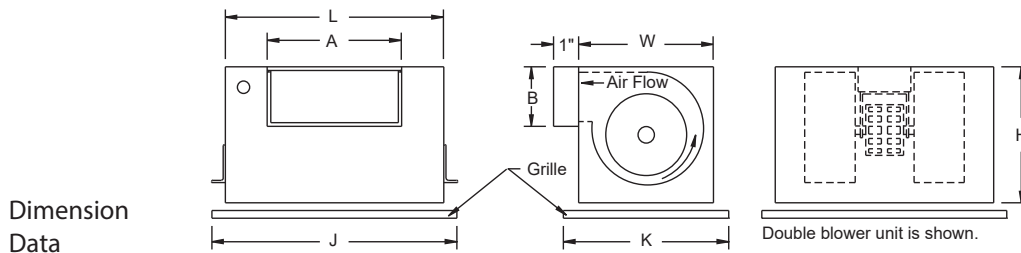
**Gemini 822 - 862**



**Performance Data**

Model GC	Max. Watts/BHP	RPM	HVI Sonest†	0.0 SP		.100 SP		.125 SP		.250 SP		.375 SP		.500 SP		.625 SP		.750 SP		List Prices
				CFM	Sones	CFM	Sones	CFM	Sones	CFM	Sones	CFM	Sones	CFM	Sones	CFM	Sones	CFM	Sones	
GC-222	39	1050	0.8	120	1.2	107	1.2	104	1.1	73	1.3									\$280.00
GC-242	65	1200	1.3	147	2.2	130	1.9	126	1.9	99	1.5									
GC-322	75	1365	3.0	217	4.4	205	4.1	202	4.1	182	3.8	148	3.3							\$324.00
GC-342	135	1610	3.5	257	4.9	237	4.5	232	4.4	212	4.3	187	4.1							
GC-422	170	1145	3.5	327	5.3	294	4.3	287	4.0	260	3.4	236	2.9	202	2.7					\$362.00
GC-522	172	1205	4.5	356	5.9	347	5.7	344	5.7	332	5.5	318	5.1	301	4.6	279	4.3	249	4.0	
GC-622	233	960	2.5	451	3.7	433	3.3	428	3.3	400	3.3	359	3.3	297	3.6					\$366.00
GC-642	351	1075	3.5	559	4.6	520	4.3	512	4.3	476	4.1	429	4.0	346	3.9					
GC-720	301	1375	5.5	709	6.7	687	6.6	682	6.6	653	6.6	619	6.3	578	6.1	535	5.9	480	5.7	\$400.00
GC-740	374	1625	7.0	852	8.7	823	8.3	815	8.3	775	7.9	727	7.5	672	7.1	616	6.3	552	5.6	
GC-822	293	910	3.5	944	4.4	929	4.6	925	4.7	904	5.0	879	4.9	830	4.8					\$570.00
GC-842	380	974	5.0	1187	6.1	1157	6.2	1149	6.2	1106	6.4	1043	5.9	905	5.5	637	4.7			
GC-862	450	1098	7.0	1433	8.5	1371	8.2	1355	8.2	1266	7.8	1149	6.9	995	6.1	775	5.3			\$840.00

Performance shown is for Installation Type B: Free inlet, ducted outlet. Performance ratings for GC-222 through GC-960 include the effects of inlet grille and backdraft damper in the air-stream. Speed (RPM) shown is nominal. Performance is based on actual speed of the test. The sound ratings shown are loudness values in hemispherical sones at 5 ft. (1.5m) in a hemispherical free field calculated per AMCA Standard 301. Values shown are for Installation Type B: Free inlet hemispherical sone levels. †HVI sones @ .1" static pressure. AMCA Certified Ratings Seal does not apply to HVI Sones.



Dimension Data

Model GC	Housing			Outlet		Plastic Grille		Steel Grille		Deluxe Aluminum Grille		Approx. Ship-Wt. Lbs.
	L	W	H	A	B	J	K	J	K	J	K	
222, 242	12-3/8	9-3/4	9-3/4	8	6	15-1/2	13-1/4	16-3/8	13-5/8	14-1/4	11	22
322, 342	12-3/8	10-3/4	10-3/4	8	6			14-1/4	12-1/4	25		
422	17	11-7/8	11-7/8	8	6			21	14-1/4	18-3/4	13-3/4	30
522	17	11-7/8	11-7/8	8	6			21	14-1/4	18-3/4	13-3/4	32
622, 642	17	11-7/8	11-7/8	10-1/2	4-3/4			21	14-1/4	18-3/4	13-3/4	35
720, 740	17	11-7/8	11-7/8	10-1/2	4-3/4			21	14-1/4	18-3/4	13-3/4	36
822, 842, 862	27	14-11/16	14-11/16	20	6			31-3/8	17-1/8	28-3/4	16-1/4	74

All dimensions in inches.

See pages C-5.0, C-6.0 & C-7.0 for accessories.