

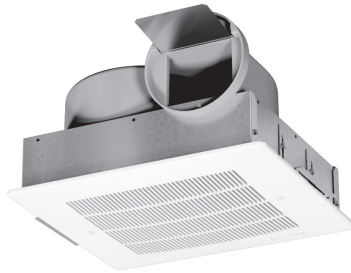


Gemini Series Cabinet Fans



Loren Cook Gemini fans provide maximum performance, durability, and ease of installation in a wide variety of ceiling and inline clean air exhaust applications. Gemini fans are easily field convertible from ceiling to inline or inline to ceiling depending on the installation needs.

Gemini 126 - 188



All units are tested in Cook's AMCA registered laboratory in accordance with AMCA Standards and are licensed to bear the AMCA Certified Ratings Seal. All Gemini units are listed by Underwriters Laboratory (UL 705) and UL listed for Canada (cUL 705).

GC 126-188 Features

- Manufactured by an ISO 9001 certified company
- AMCA certified ratings seal for sound and air performance
- Listed by Underwriters Laboratories UL 705
- Permanently Lubricated ODB, 2-speed motor with thermal overload protection
- Forward curved polypropylene wheel balance to AMCA Standard 204-05
- High impact styrene grille
- Simple conversion from ceiling to inline with kit # 797181
- Optional fan speed controller available for precise system balancing
- Standard 115/1/60 fan motors

Gemini 200 - 740



GC 200-862 Features

- Manufactured by an ISO 9001 certified company
- AMCA certified ratings seal for sound and air performance
- Listed by Underwriters Laboratories UL 705
- Minimum 20 gauge galvanized steel, acoustically insulated cabinet
- Permanently Lubricated ODB motor with thermal overload protection
- Forward curved galvanized steel wheel balance to AMCA Standard 204-05
- High impact styrene grille on 200 & 300 series
- Powder painted white steel grille on 400 through 862 series
- Simple conversion from ceiling to inline. No kit required.
- Optional fan speed controller available for precise system balancing
- Standard 115/1/60 fan motors

Gemini 822 - 862

