



## Industry News

[Markets](#) [Equipment](#) [Catalog](#) [Design Tools](#)

[Visit our Website](#)

### Latest News



[Administration mandates US iron, steel for infrastructure projects](#)

[Green roofs could reduce indoor air pollution](#)

[April is World Landscape Architecture Month](#)

[Is Your Office Ready To Help Protect Employees?](#)

[Trends In Surveillance Cameras](#)

### IES Markets Served

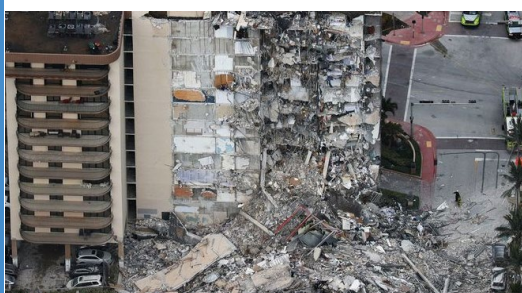
IES is capable of handling any HVAC project for commercial and residential buildings. Based in Southwestern Pennsylvania, IES serves a large geographical area across Western Pennsylvania, Western Maryland, and Northern West Virginia.



[IES Markets Served](#)

### Interesting Stuff

#### Settlements, more suits at Surfside, FL Condos

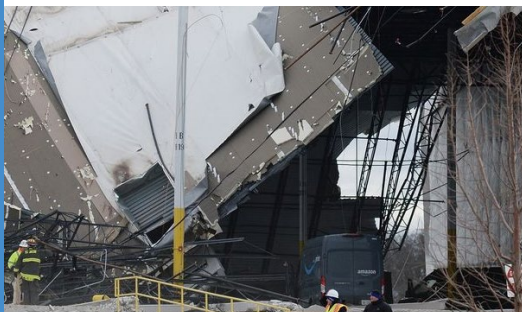


In the last month, three settlements were reached in the class-action suit surrounding last June's deadly collapse at the Champlain Towers South building near Miami, which killed 98 people. In addition, the families of victims and survivors filed suits against three other companies that worked on construction at the neighboring Eighty Seven Park condo.

Three defendants are paying a total of...

[Read More](#)

#### 'Especially concerning' potential code violations found at site of Amazon warehouse destroyed by tornado



An engineer has called out alleged safety and structural defects at an Amazon warehouse in Illinois that collapsed during a tornado in December, killing six workers.

In the report released by an attorney representing the family of one of the victims, West County EMS and Fire Protection District Fire Marshal Dan Bruno detailed how he entered the site in Edwardsville, Illinois, on Dec. 10, shortly after the tornado struck, and saw what he called "especially concerning" potential code violations. He noted that none of the...

[Read More](#)

#### Offices adapt as COVID highlights hazards of poor indoor air quality



In 2019, the Green Building Alliance sent a survey about indoor air quality to its partner properties in Pittsburgh's central business corridor that are working to cut their energy and water use.

It was a step in defining a baseline so the partnership could start driving improvement of air quality inside buildings, which is less studied — and can be healthier — than the air outdoors.

The indoor air quality metric is...

[Read More](#)



Please [follow us](#) on LinkedIn to see more helpful information and engage with us.

