

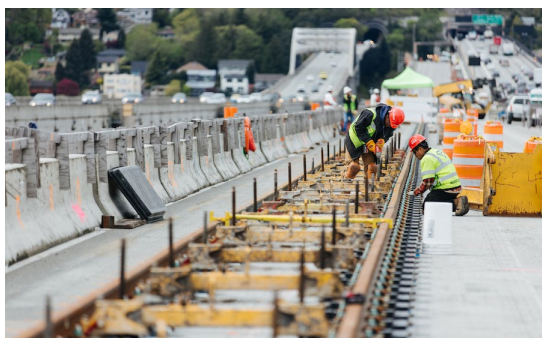


## Industry News

[Markets](#) [Equipment](#) [Catalog](#) [Design Tools](#)

[Visit our Website](#)

### Latest News



[Using technology to head off construction fraud](#)

[Postmates to deploy autonomous delivery robots in San Francisco](#)

[Fibers from old tires can improve fire resistance of concrete](#)

[Fluid-inspired material self-heals before your eyes](#)

[Crews Installing First-Ever Light Rail Track On a Floating Bridge](#)

### ASHRAE Approves Air Curtains in Monumental Ruling



[Read More](#)

The leading policy-maker for the heating, refrigeration and air-conditioning industry has formally approved the use of properly certified and installed air curtains as an exception to the vestibule requirement.

This new standard is effective with the 2019 edition of ASHRAE/IES Standard 90.1-2019, Energy Standard for Buildings Except Low-Rise Residential Buildings. It is similar to the guidelines first established by the International Code Council (ICC), effective with its 2015 International Energy Conservation Code (IECC). However many states continued to defer to ASHRAE 90.1. [>>>](#)

### Are Your Buildings Feeling The Heat?



[Read More](#)

As the Apollo 11 Lunar Module approached the Moon's surface for the first manned landing, commander Neil Armstrong switched off the autopilot and flew the spacecraft manually to a landing.

A new video, created at Arizona State University's School of Earth and Space Exploration, shows what Armstrong saw out his window as the lander descended -- and you'll see for yourself why he took over control..

A team led by Mark Robinson, principal investigator for the Lunar Reconnaissance Orbiter Camera (LROC) and professor in the School, recreated the view in a striking video. They used the crew's voice [>>>](#)

### Performance Pay Plans Improve Results!



[Read More](#)

As the Apollo 11 Lunar Module approached the Moon's surface for the first manned landing, commander Neil Armstrong switched off the autopilot and flew the spacecraft manually to a landing.

A new video, created at Arizona State University's School of Earth and Space Exploration, shows what Armstrong saw out his window as the lander descended -- and you'll see for yourself why he took over control..

A team led by Mark Robinson, principal investigator for the Lunar Reconnaissance Orbiter Camera (LROC) and professor in the School, recreated the view in a striking video. They used the crew's voice [>>>](#)

### Building the wall: A construction timeline update

[Click for Wall Construction Timeline](#)

