



Industry News

[Markets](#) [Equipment](#) [Catalog](#) [Design Tools](#)

[Visit our Website](#)

Latest News



[Building the wall: A construction timeline](#)
**Check back often - - this link is continually being updated.

[3D-printed precast concrete molds for redeveloped NYC landmark a first](#)

[Contractors Increase Use of In-House Design to Better Manage Project Demands](#)

[Improving Long-Term HVAC Performance](#)

[Construction Is Booming Now but Without New Workers and Tech Its Future Is Uncertain](#)

Update: AJ Manufacturing Diffusers for Hospital Pharmacy Applications



For those with concerns about passing the aerosol test:

Good News: Our AJ Manufacturing equipment for pharmaceutical usage recently passed an aerosol challenge test that was performed onsite.

***Also, lighting built into the diffuser is available for those applications with limited ceiling space for other lighting.

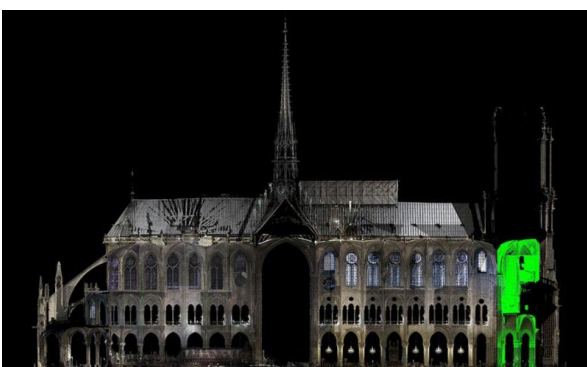
IES Markets Served



IES is capable of handling any HVAC project for commercial and residential buildings. Based in Southwestern Pennsylvania, IES serves a large geographical area across Western Pennsylvania, Western Maryland, and Northern West Virginia.

[IES Markets Served](#)

Laser Scan Data Integral to Fast-Track Rebuild of Notre Dame Cathedral



As the donations pour in to aid the reconstruction efforts of the fire-damaged Notre Dame cathedral in Paris and the French government opens the question of whether to rebuild the 850-year-old landmark as it was, engineers, architects and contractors can turn to 3D laser scan data of Notre Dame to help with the government's pledge to reconstruct the building within five years.

[Read More](#)